

**TONY LANE**

VOTIVES

*Tony Lane has been painting for over 30 years, had more than 100 exhibitions, and had his works shown and bought internationally.*

*Lane has studied under Don Binney, Gretchen Albrecht and Colin McCahon, to name but a few. In a 2015 National Business Review, John Daly-Peoples posed, "Tony Lane could be one of the great icon painters of his age".*

## TONY LANE

*Lane's paintings sometimes look like they could be hung in the back of an old Italian or Spanish church ... they wouldn't look out of place because the symbolism hints at narratives and connections to older art forms while dealing with contemporary thinking.*

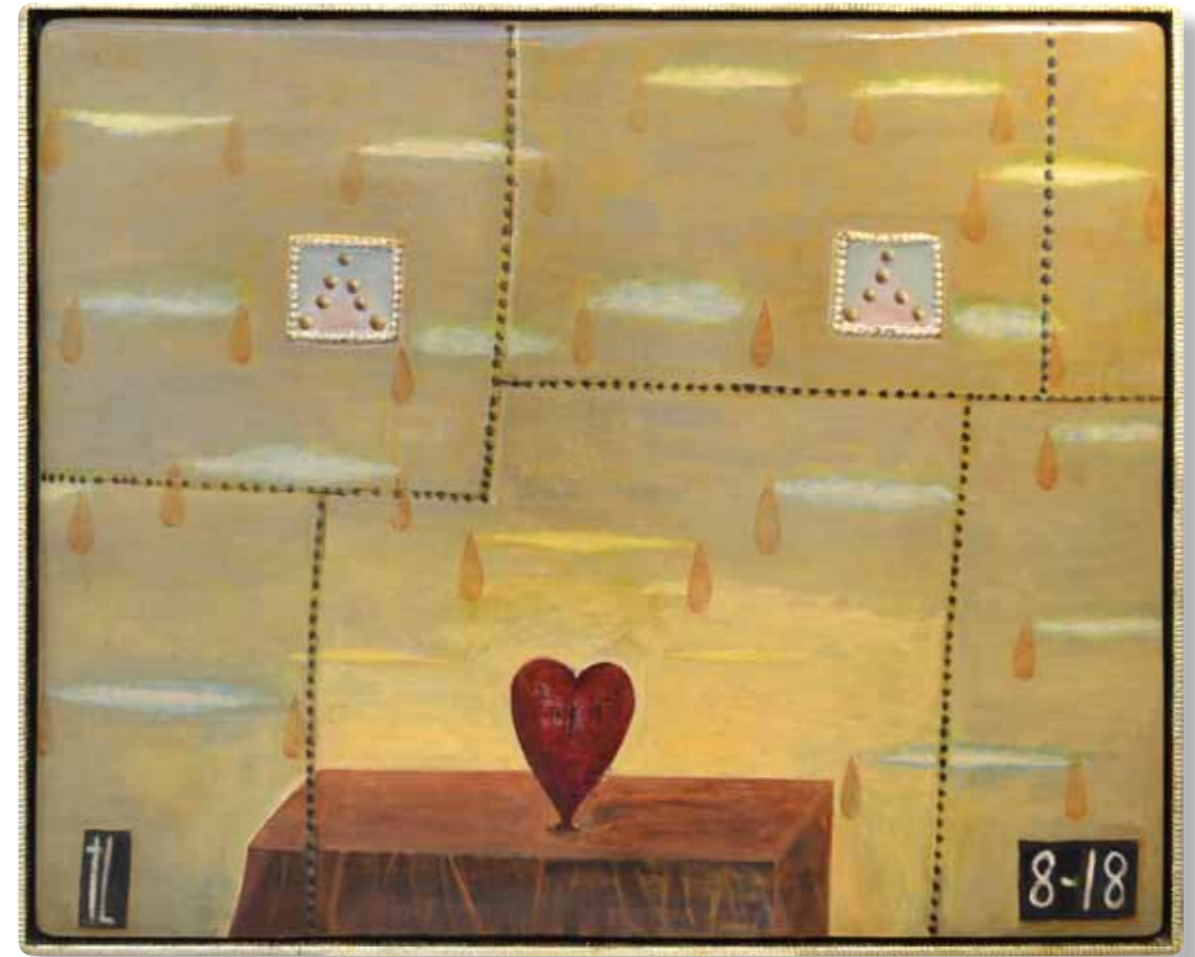
*The artist is interested in our time, our place on earth, and within the cosmos. The paintings can be local, trees, hills, mountains, but they speak of journeys, isolation, meditation, and devotion. If they are to be considered votives, they are also objects of veneration, objects offered in fulfilment of a vow.*



*Last Light, Pakawau (2018) oil on gesso panel 690 x 1260mm*



*Necklace* (2017) oil on gesso panel 1200 x 1200mm



*Red Heart* (2006-18) oil, aluminium leaf & composition ornaments on gesso panel 1010 x 1240mm





*Table With Cloth* (2018) oil on gesso panel 420 x 570mm



*Pendant* (2018) oil on gesso panel 350 x 375mm



*Palette* (2018) oil on panel 620 x 870mm



*Back Range* (2018) oil on gesso panel 640 x 1340mm



*I Have Buried My Treasure Under These Trees* (2017) oil on gesso panel 320 x 430mm

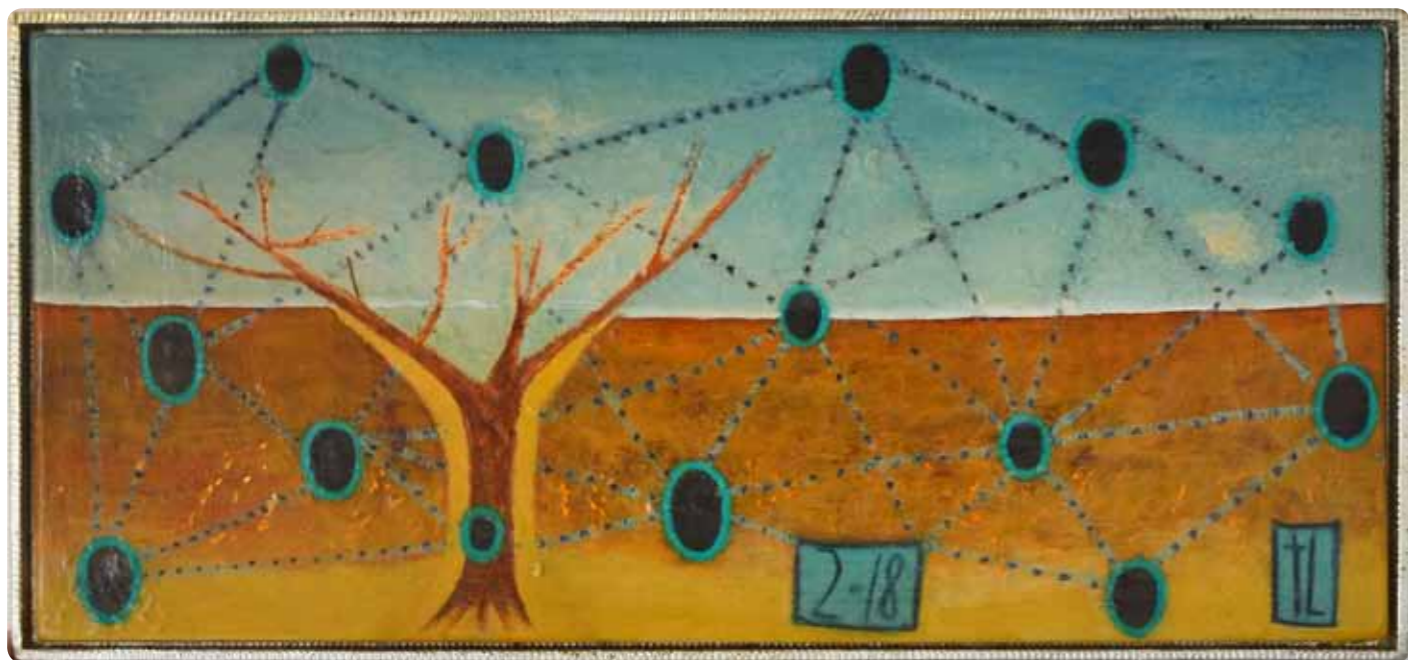


*Stack* (2018)  
oil on gesso panel  
1800 x 595mm



*Double Vision* (2018) oil on gesso panel 1140 x 1080mm





*Constellation* (2018) oil on gesso panel 530 x 1170mm



*White Tree* (2018) oil on gesso panel 640 x 680mm



*Day Through Night* (2017) oil on gesso panel 370 x 1230mm