



**KATHY BARBER**  
**Out of Nothing**

Rather than using the canvas as a space upon which to project a series of preconceived mental images Kathy Barber approaches the making of each of her paintings from a place of nothing. Notions of outcome are held in check so the physical act of painting, the use of materials and a personal visual language can take centre stage. The result is of something intuitive and yet learned, forthright, but cautiously enigmatic.

What has gone onto the canvas is not a picture but what matters; the physicality, the intuition, and the personal expression.

Barber's new paintings are in a sense a palimpsest. If, as in textural studies, a palimpsest is a manuscript or a very old document from which the writing has been removed and the surface rewritten on again, so it is that these paintings can be read as if there are many levels of meaning. In essence they are paintings where the subtext remains, but the thought has been rubbed away. What remains is the encounter.

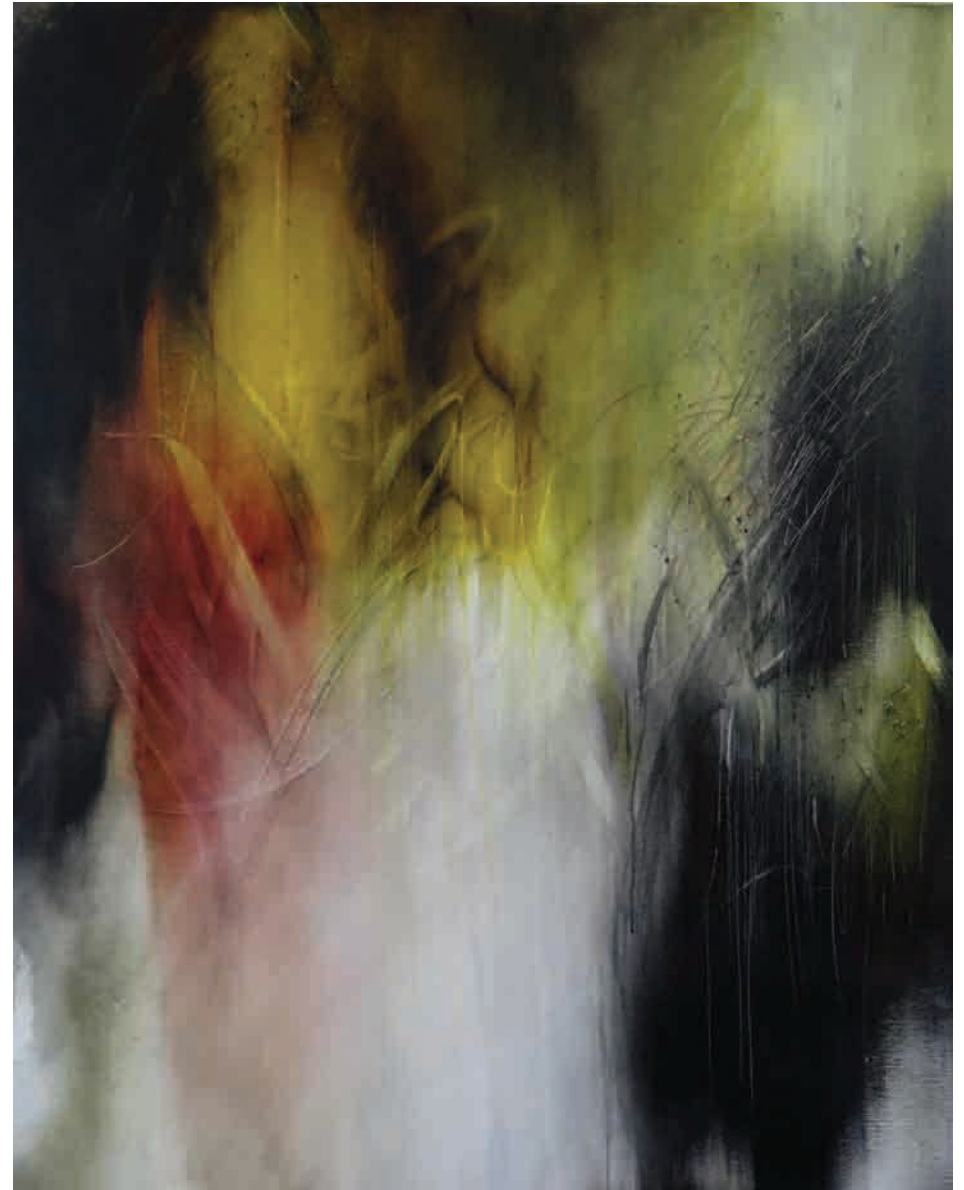
Out of nothing comes something inseparable from life, something biographically relevant – about the artist and about art.



Cover: Out of Nothing (2018) acrylic and oil glaze on linen 1200 x 950mm  
Talisman (2018) acrylic and oil glaze on linen 1200 x 950mm



Raven (2018) acrylic and oil glaze on linen 1200 x 950mm



Absence (2018) acrylic and oil glaze on linen 1200 x 950mm  
Following spread: Navigate (2018) acrylic and oil glaze on linen 950 x 1200mm [detail]







Cloudspeak (2018) acrylic and oil glaze on linen 1050 x 800mm



Lament for a Solitary Man (2018) acrylic and oil glaze on linen 1050 x 800mm  
Back cover: Void (2018) acrylic and oil glaze on linen 800 x 1050mm





**orexart**

**[www.orexart.co.nz](http://www.orexart.co.nz)**

1/15 putiki street, arch hill, auckland 1021  
tue-fri 11am-5pm, sat 11am-4pm tel.+64 9 378 0588